

# Ball screw nut with single-path return

## Rectangle nut–Ø16



### Features

- Material 16MnCr5 or 20MnCr5, pressed, hardened, polished
- Versions for recirculating ball spindle Ø16 mm
- Nut pitches: 2.5 / 4 / 5 / 10 mm
- Balls are rerouted internally
- As block housing with base fixing
- Regreasing through grease nipples 90°, 0°

### Load factors

Pitch	Nominal Ø	dynamic load factor	static load factor
2.5 mm	16 mm	3500 N	5500 N
4.0 mm	16 mm	4600 N	7200 N
5.0 mm	16 mm	4600 N	7200 N
10.0 mm	16 mm	4200 N	6500 N

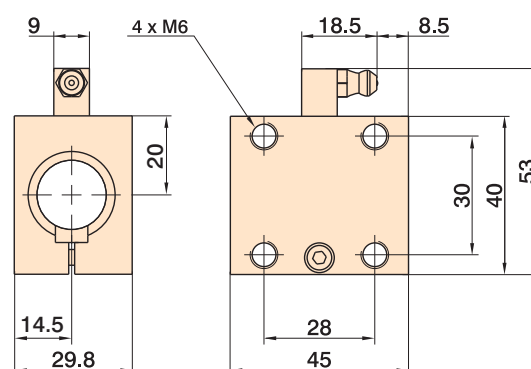
### Ordering data only for spindles Ø16

Pitch	Part no.
2.5 mm	213 003 1003
4.0 mm	213 003 1004
5.0 mm	213 003 1005
10.0 mm	213 003 1010

with matching:  
dirt scraper

- VE 2 unit Part no.: 213500 0001

### Dimensioned drawings



## Round nut – Ø16 Ø25



### Features

- Material 16MnCr5, ground
- Versions for recirculating ball spindles Ø16 and Ø25 mm
- Nut pitches: 2.5 / 4 / 5 / 10 mm 20 mm (Ø 16 mm), 5/10 and 20 mm (Ø25 mm)
- Balls are rerouted internally
- The version with nut pitch 20 mm is supplied with scrapers

### Load factors

Pitch (mm)	Nominal Ø (mm)	Dyn. load factor (N)	Static load factor (N)
2.5	16	3500	5500
4.0	16	4600	7200
5.0	16	4600	7200
10.0	16	4200	6500

5.0	25	5100	12600
10.0	25	5100	12600
20	25	3570	8800

### Ordering data only for spindles Ø25 only for spindles Ø16

Pitch	Part no.
5.0 mm	213 700 0005
10.0 mm	213 700 0010
20.0 mm	213 700 0020

Pitch	Part no.
2.5 mm	213 503
4.0 mm	213 514
5.0 mm	213 505
10.0 mm	213 510
20.0 mm	213 520

with matching:

dirt scraper

- VE 2 unit
- Part no.: 213700 9000

with matching:

dirt scraper

- VE 2 unit
- Part no.: 213500 0001

### Dimensioned drawings

