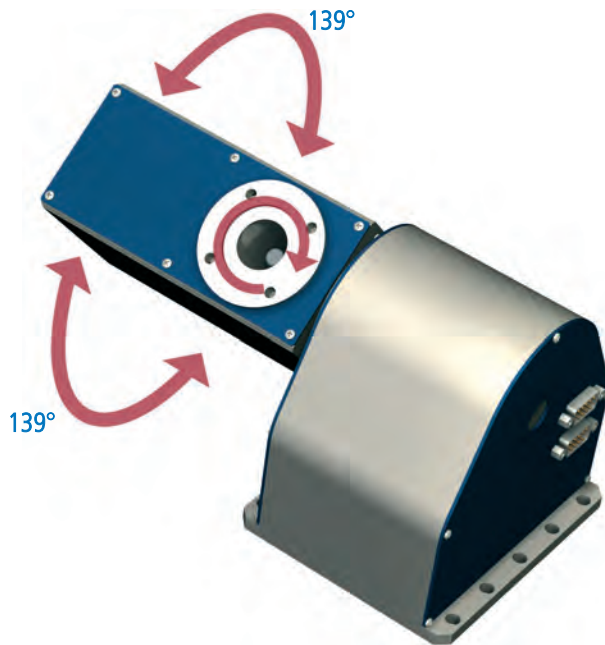


Rotary tilting unit

ZDS 2030



General

The **rotary tilting unit ZDS 2030** can be used as a 4th/5th axis in CNC machines for fine workshops or in the handling area.

It is a combination of ZD 30 and the modified version of ZR 20.

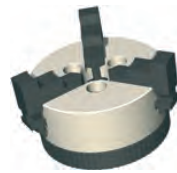
ZDS 2030 enables 5-side machining or free-form surface machining on a conventional 3-axis system of easily machinable materials (e.g. plastic).

The tilting angle is 139° in both directions.

Ordering data

Rotary tilting unit ZDS 2030
Part no.: **265000 0000**

Accessories



Chuck assembly
3-jaw chuck Ø 65
Part no.: **269060 2065***

* including flange



Clamping ring housing
SK 20 clamping ring housing for tools Ø 3 - 13 mm, with installation ring
Part no.: **239172 0020**
Clamping rings are on page 5-32.

dimensioned drawing

