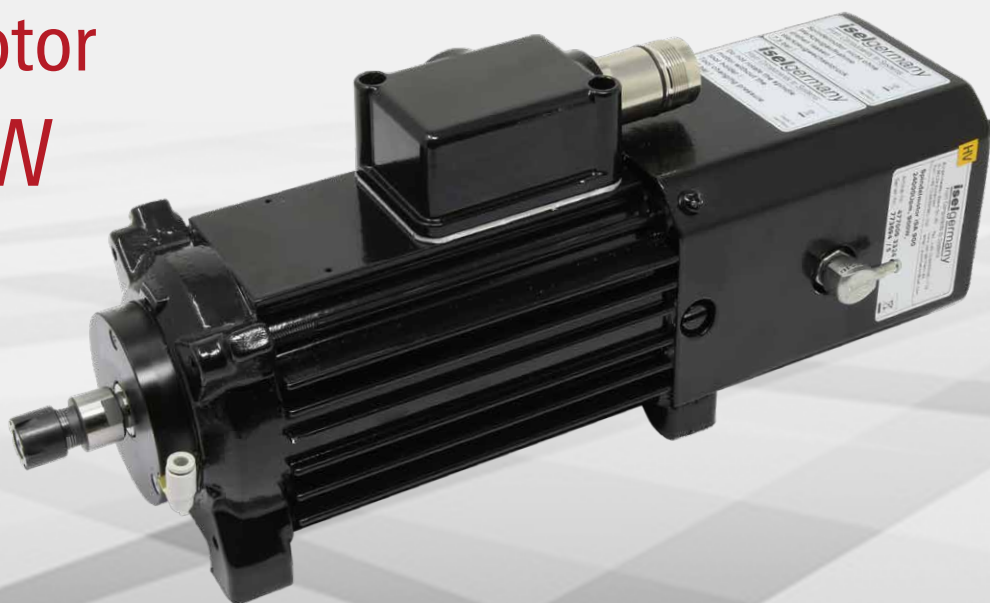


# Spindle motor iSA 900 W



## iSA 900 W | Spindle motor with automatic tool changer

- robust 2-pole AC motor (asynchronous motor)
- square shape
- protection class IP55, insulation class F
- M23 plug connection
- cast end shield A and B sides
- tool change SK 11 pneumatic (7,5 bar)
- incl. ER 11 collet, Ø 3 mm
- clamping range Ø 1 mm – Ø 7 mm
- intrinsic ventilation B-side
- two precision bearings
- controlled by frequency converter
- fitting bores Ø 5 mm ( $\pm 0.1$ ) for easy spindle replacement

## Technical specification

Torque [Nm] (at rated speed 22,000 rpm)	0.37
Speed range [U/min.]	6,000 – 24,000
Cut-off frequency* [Hz] / Speed [U/min.]	400 / 24,000
Number of poles	2
Rated voltage [V]	230 (star connection)
Rated current [A]	3.25
Power factor (cos $\phi$ )	0.84
Rated power [kW] (S6 = 40% Operation)	0.9
Concentricity [mm]	0.01
Weight [kg]	5.8

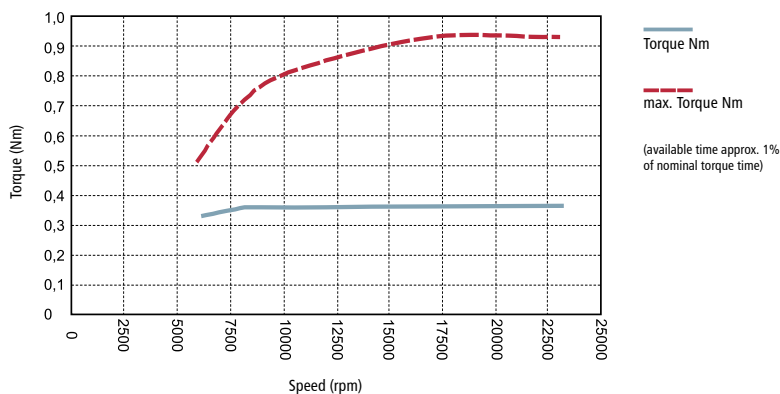
\*cut-off frequency = frequency to which the motor effect is designed.

The spindle motor iSA 900 W is only for aluminium-, suitable for wood and plastic processing.

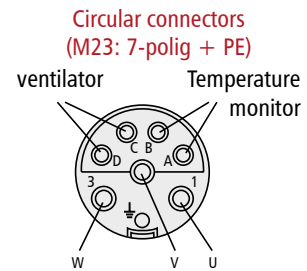
## Options

- sensory module
- CoolMin<sup>®</sup> (external)
- frequency converter SKC 750
- tool changing station
- suction device
- various collets ER 11
- mounting plates
- connection cable in different lengths
- sealing air connection

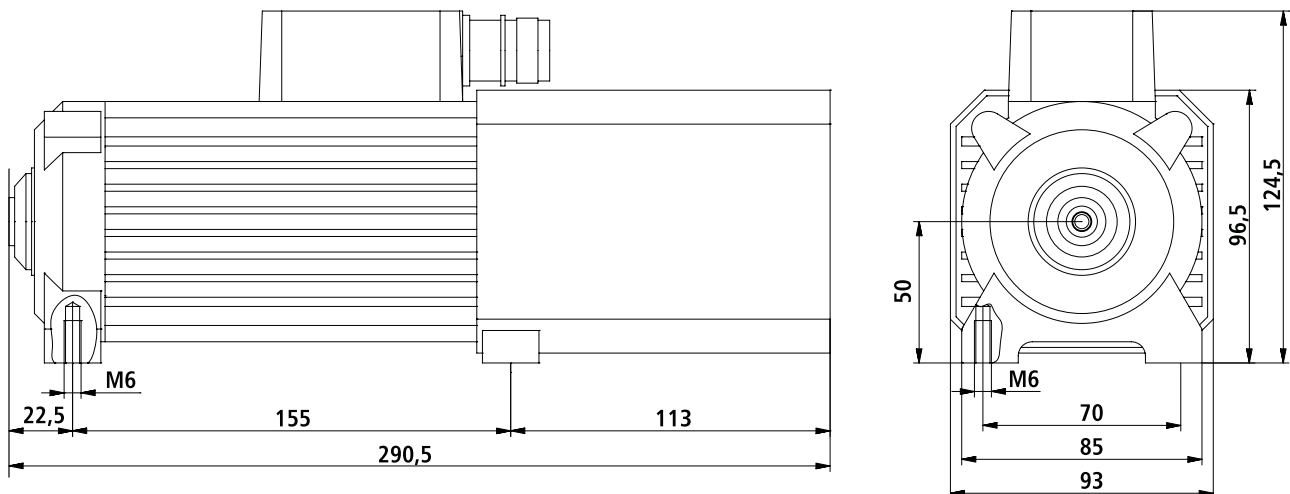
## Torque curves



## Motor connection



## Dimensional drawing



### Order data

### Part no.

Spindle motor	with collet ER 11 (6 mm)	477009 3324
iSA 900 W	with converter** and connecting cable (8 m), incl. collet ER 11 (6 mm)	310709 3612
CoolMin <sup>®</sup>	external	239011 0119
Frequency converter	SKC 750	311707 6000
Collet Set	ER 11 (1.0 / 1.5 / 2.0 / 2.5 / 3.0 / 3.5 / 4.0 / 4.5 / 5.0 / 5.5 / 6.0 / 6.5 / 7.0 mm)	239170 0001
Tool change station***	linear SK 11, 5-port	239011 0053
	linear SK 11, 8-port	239011 0083
	round SK 11, 12-port	239100 4900
Tool holder	SK 11 (for collet ER 11)	239111 0001
Suction device	prepared for Ø 50 mm hose	239012 0004
	prepared for Ø 50 mm hose, for CoolMin <sup>®</sup>	239012 0014
Mounting plates isel systems (Z axis)	for LES 5 / EuroMod / FlatCom / ICV	277028 0003
	for ICP	277028 0010
	linear unit LES 6	277028 0008

\*\*converter pre-set for spindle

\*\*\*special changing stations on request