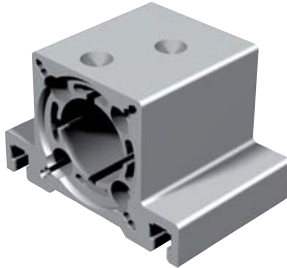


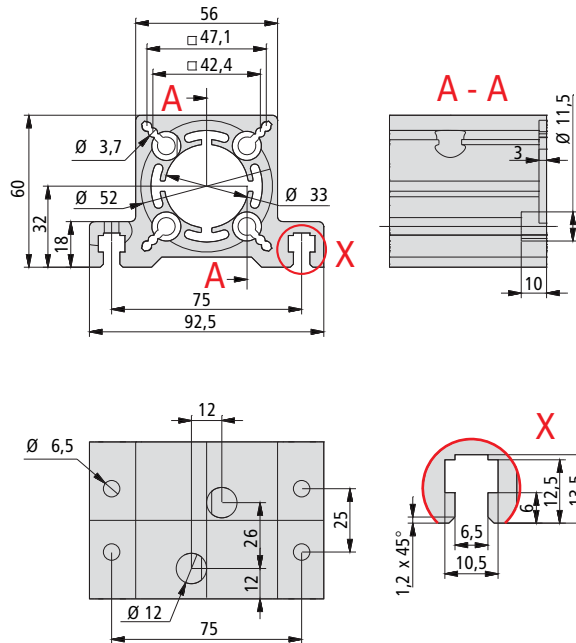
# Bearing supports

## Bearing support 1



- Aluminium profile compliant with DIN EN 12020-2
- As a parallel connection between the flange bearing and motor flange
- Flat milled securing surfaces
- Version for recirculating ball spindle  $\varnothing 16$  mm
- Universal securing options

Part no.: **216504 0007**



## Bearing support 2



- Aluminium profile compliant with DIN EN 12020-2
- As a parallel connection between the flange bearing and motor flange
- Version for recirculating ball spindle  $\varnothing 25$  mm
- Universal securing options

Part no.: **216504 0008**

