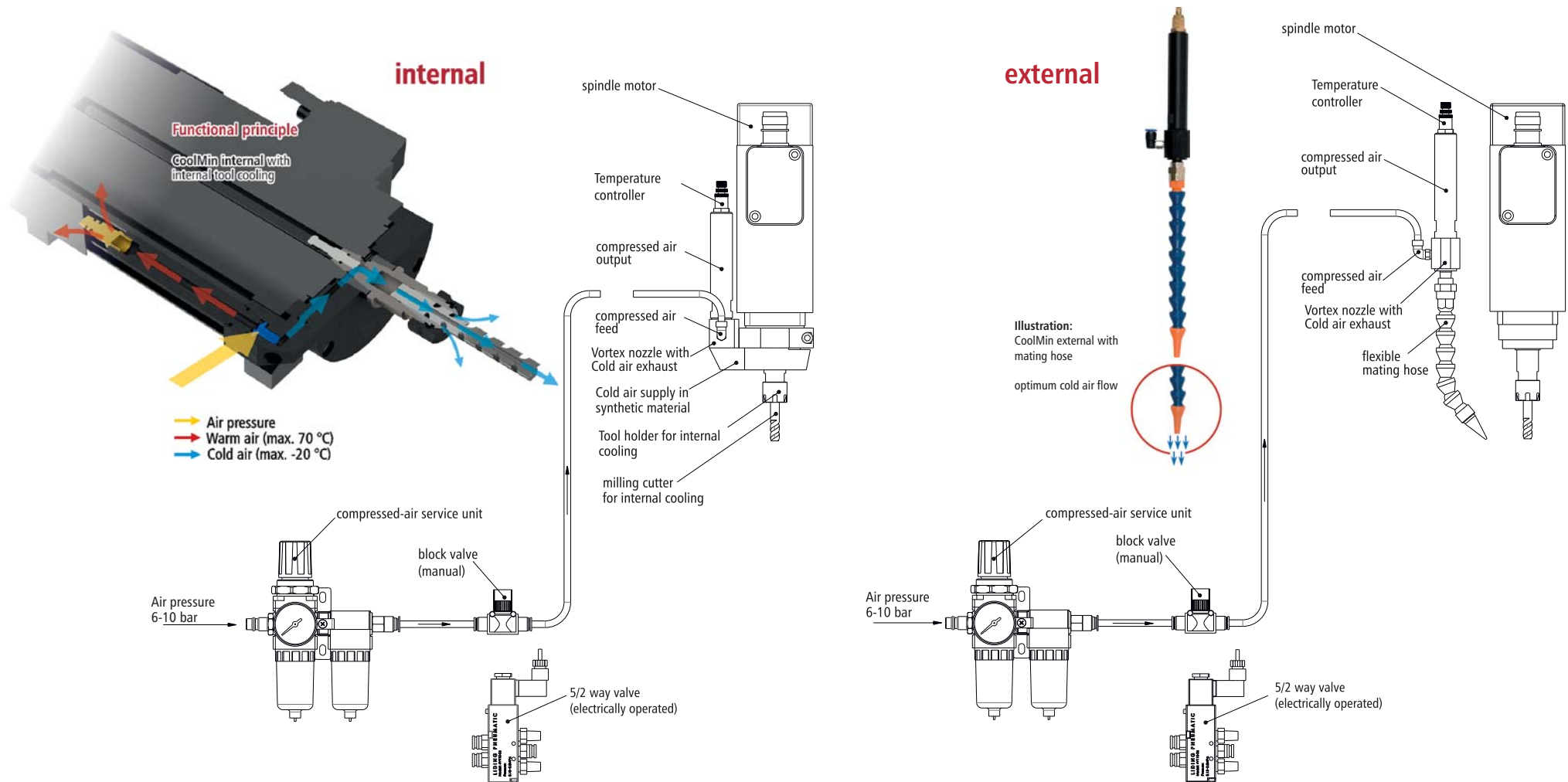


# Functional principle isel tool cooling system **COOLMin**



The **isel tool cooling system** is operated with cold air (up to max. -20°C). In this system, normal operating air (6 up to 10 bar) is used and is freed of dirt particles with a compressed-air service unit to prevent icing.

The very clean air (particle sizes < 1µm) is separated in cold and warm air currents with the help of a cold air nozzle (Venturi principle). The cold air can now be used for the tool and workpiece cooling after isel principle.