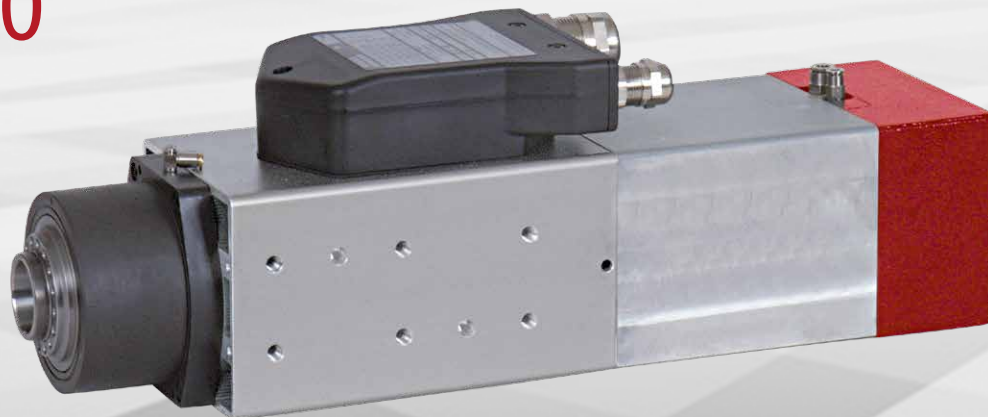


Spindle motor iSA 4000



iSA 4000 | Spindle motor with pneumatic tool charger

- robust 4-pole AC motor (asynchronous motor)
- square shape
- taper cleaning
- spindle bearing
- protection class IP54, insulation class F
- steel end shield A-side, die-cast aluminium B-side
- motor shaft to take ER 30 collets
- double precision bearings on each side A and B
- automatic tool change
- including collet holder SK 30
- incl. ER 32 collet, Ø 6 mm
- clamping range Ø 3 mm – Ø 20,0 mm
- external fan 24 V DC
- controlled by frequency converter
- tool change SK 30 pneumatic (7,5 bar)
- sealing air connection
- sensors for speed and tool taper monitoring

Options

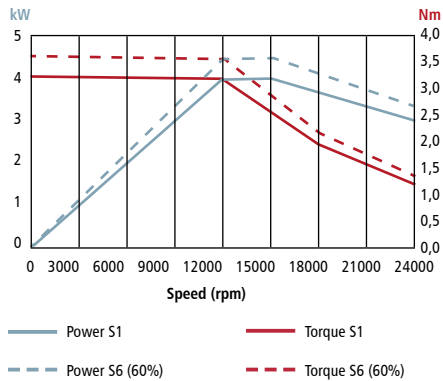
- frequency converter SKC 4000
- tool changing station
- suction device
- various collets ER 32
- mounting plates
- various lead lengths

Air-cooled,
pneumatic ISO-30
spindle for heavy-
duty machining.



special application:
iSA 4000 with additional
blowing nozzles and dust extraction

Torque curves

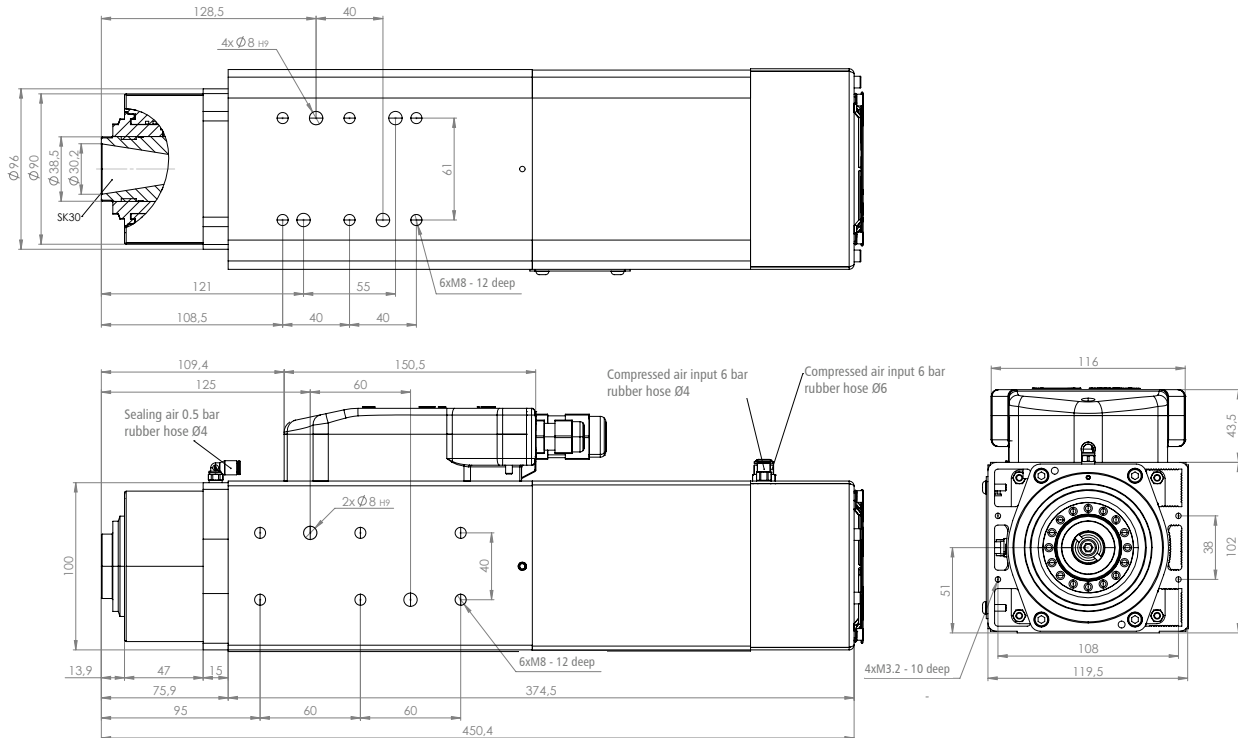


Technical specification

Torque [Nm] (at rated speed 24.000 rpm)	S1: 1.2 / S6: 1.4
Speed range [rpm]	bis 24,000
Cut-off frequency* [Hz] / Speed [rpm]	800 / 24,000
Number of poles	4
Rated voltage [V]	400
Rated current [A]	9
cos	0.7
rated output [kW]	S1: 4.0 / S6: 4.5
concentricity [mm]	0.03
weight [kg]	18

*cut-off frequency = frequency to which the motor effect is designed

Dimensioned drawings



Order data

Part no.

Spindle motor ISA 4000	incl. collet ER 32 (Ø 6 mm) and collet holder SK30	477822 4000
	with converter** and connecting cable (8 m), incl. collet ER 32 (Ø 6 mm) and collet holder SK30	310736 3616
CoolMin®	external (with electric shut-off valve and maintenance unit)	239011 0117
Frequency converter	SKC 4000	311740 6500
Tool holder	SK 30 (for collet ER 32)	239130
Collet set	ER 32 (3,0 / 4,0 / 5,0 / 6,0 / 7,0 / 8,0 / 9,0 / 10,0 / 11,0 / 12,0 / 13,0 / 14,0 / 15,0 / 16,0 / 17,0 / 18,0 / 19,0 / 20,0 mm)	239130 0000
Tool changing station***	linear SK 30, 4-fold	239011 0045
	linear SK 30, 5-fold	239011 0055
Exhaust device	prepared for Ø 80 mm hose	239012 0020
Mounting panels isel-Systems (Z-Axis)	for linear unit LES 5	277028 0020

**converter pre-set for spindle

***Special change stations on request