



Assembly table MT2



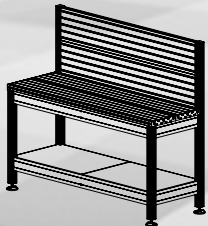
Assembly tables for clamping fixtures, clamping devices, for measuring, checking, testing, etc.

- Base frame made of PS series aluminum profiles with struts made of PP series aluminum panel profiles
- Table top and rear panel made of RE series aluminum rectangular profiles with T-slot inserts

Accessories: see page 118

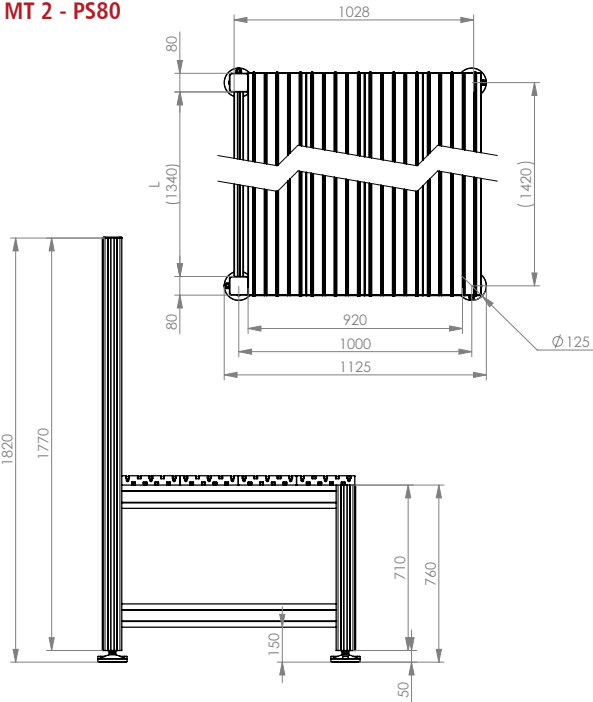
Accessories:

- Shelf
- Mounting plates for robots
- Lifting rollers

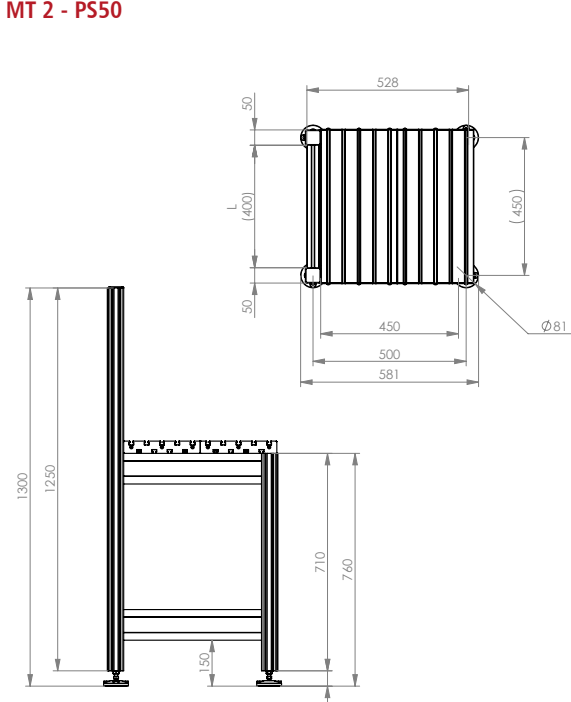


Dimensional drawings

MT 2 - PS80



MT 2 - PS50



Order data

MT 2 assembly table with T-slot plate	Table surface [mm]	Part No.	Shelf (optional) Part No.
MT 2 - PS80 - 1500	1500 x 1000	248550 1001	248550 10011
MT 2 - PS80 - 2000	2000 x 1000	248550 1002	248550 10021
MT 2 - PS80 - 2500	2500 x 1000	248550 1003	248550 10031
MT 2 - PS80 - 3000	3000 x 1000	248550 1004	248550 10041
MT 2 - PS50 - 500	500 x 500	248550 1005	248550 10051
MT 2 - PS50 - 1000	1000 x 500	248550 1006	248550 10061
MT 2 - PS50 - 1500	1500 x 500	248550 1007	248550 10071
MT 2 - PS50 - 2000	2000 x 500	248550 1008	248550 10081



Assembly table MT2 | variants with T-slot plate



PS50 - 500



PS50 - 1000



PS50 - 1500



PS50 - 2000



MT 2 - PS80 - 1500



MT 2 - PS80 - 2000



MT 2 - PS80 - 2500



MT 2 - PS80 - 3000