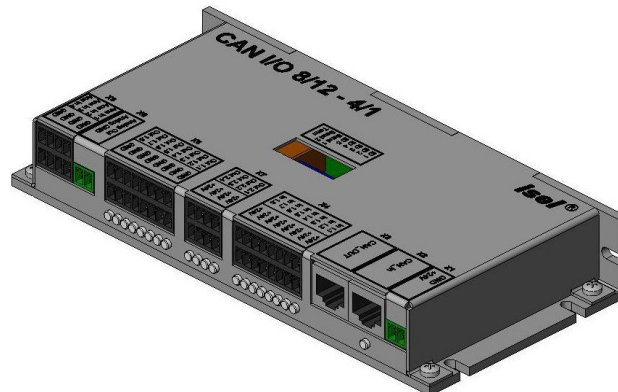


CAN I/O 16/16



CAN I/O 8/12 - 4/1

Operating Instruction isel - CAN - I/O - Modules

**CAN I/O 16/16
CAN I/O 8/12 - 4/1**

www.isel.com

isel[®]

About this manual:

The information, technical data and dimensions contained in this print are up-to-date when published. Any possible misprints and mistakes cannot be excluded however. We are thankful for any suggestion for improvement and indication of mistakes.

Please note that the used software- and hardware descriptions of each individual company are generally subject to protection of trademarks and patent law.

All rights reserved. It is not permitted to reproduce or electronically process, duplicate or spread any part of our prints in any way (print, copy etc.) without written permission of **isel Germany GmbH**.

Manufacturer: **isel Germany GmbH**
Bürgermeister-Ebert-Straße 40
D-36124 Eichenzell

Tel.: (06659) 981-0
Fax: (06659) 981-776
Email: info@isel.com
<https://www.isel.com>

Part.-No.: 970321 BE004

Status: 03/2021

Revision index	Date of change	Reason for the change	Changed by
c	13.05.2025	Changed company and logo	CB
b	11.03.2021	DIP swich correction	CB
a	11.12.2014	Serial number	JG
	03/2013	First version	JG

Contents

- 1 Introduction..... 2**
 - 1.1 General function, benefit in application 2
 - 1.2 Intended use..... 3
 - 1.3 Safety symbols 3
 - 1.4 Safety guidelines 4

- 2 Technical specifications 5**
 - 2.1 General, process - and logic power supply 5
 - 2.2 Module overview 7
 - 2.3 Plug allocation 8
 - 2.4 DIP Switches 12
 - 2.5 Assembly, installation, connection..... 13
 - 2.5.1 Base connection (Logic voltage and CAN bus) 13
 - 2.5.2 Digital inputs 13
 - 2.5.3 Digital outputs (relay outputs) 14
 - 2.5.4 Digital electronic outputs (switching transistors) 15
 - 2.5.5 Analog output 16
 - 2.5.6 Analog input 18
 - 2.5.7 Diagnosis, signalization, fault states 18

- 3 Integration into the control software (ProNC, Remote)..... 19**
 - 3.1 Settings in the module management 19
 - 3.2 Settings within the Contro administration 21
 - 3.3 Version information 24
 - 3.4 Diagnosis function 25
 - 3.5 Status information 26

- 4 Index 27**

1 Introduction

1.1 General function, benefit in application

The CAN-I/O-Module is an Input/output-module for peripheral automation by linking intelligent modules to the CAN bus (Controller Area Network).

Such modules are:

- Positioning modules for numerical axes, e.g. IMD10, IMD20, IMD40 or CPC12 interface from **isel Germany GmbH**
- HF-Inverter for working spindles
- I/O-Modules for binary (analog) input/output, e.g. CAN-I/O-Modules from **isel Germany GmbH**

All CAN-Modules are intelligent, that means they have at least one microprocessor with integrated on chip or separate CAN-Controller. The CAN-I/O-Modules follow the CANopen- Standard Device profile for I/O-Modules: CiA Draft Standard Proposal DS301 V4.0 und DS401 V2.0.

The **advantages** of using I/O-Modules with CAN interface are:

- The binary (analog) Inputs and Outputs are available close to the process sensors (inputs) as well as to the actuators (outputs). A costly, susceptible and EMC sensitive cabling to the (central) CNC-Controller (CNC-Master, CNC-Control) will be cancelled.
- Additional modules can be integrated and configured in a simply way:
 1. Plug node to CAN-Bus
 2. Set a new node address for the I/O module
 3. Assign the respective software driver (DLL) to the application software (ProNC or Remote)
- There are extensive diagnostic- and test-possibilities because every CAN-I/O-Module is intelligent. That means, that the modules are able to give status and error information to the CNC-Master (this is also the CAN Master) on demand.

1.2 Intended use

The CAN-I/O module is intended to be used as a peripheral Input / Output module and therewith to connect sensors and actuators from an industrial process to this module:

- binary or analog sensors (Inputs)
- binary or analog actuators (Outputs)

1.3 Safety symbols



Danger

This symbol indicates dangers that cause damages for person's health, physical injury or death.



Attention

This Symbol indicates important notes. Ignoring this symbol leads to damages and malfunctions of the module.



Information

This symbol indicates important information and notes.

1.4 Safety guidelines

info

- The CAN-I/O-Modules 16/16 resp. 8/12-4/1 are designed due to current technical and recognized rules.
- Do not expose the device to high humidity or high vibrations.
- Admissible ambient temperature : +5°C bis +40°C
- Storage temperature : -25°C bis +70°C



- The device may only be used if it is in correct condition. Any faults have to be eliminated immediately. Neither children nor non-authorized persons are allowed to put the device into operation.
- The device may only be used for the intended use, i.e. I/O operations.
- All work on the module must be executed from authorized personal regarding electrical industry rules and accident prevention regulations.
- Assembly and use of operating material has to be according to the appointments of **Machinery Directive 2006/42/EU** resp. the **Low Voltage Directive 2006/95/EU**.


In case of improper, incorrect use even the compliance of the respective rules and standards does not protect against physical damages and damage to property.



- Please take care of the instruction manual. Be sure that all users know the instructions.
- Ignoring the instruction manual can lead to damage, heavy physical damage or to death.

2 Technical specifications

2.1 General, process - and logic power supply

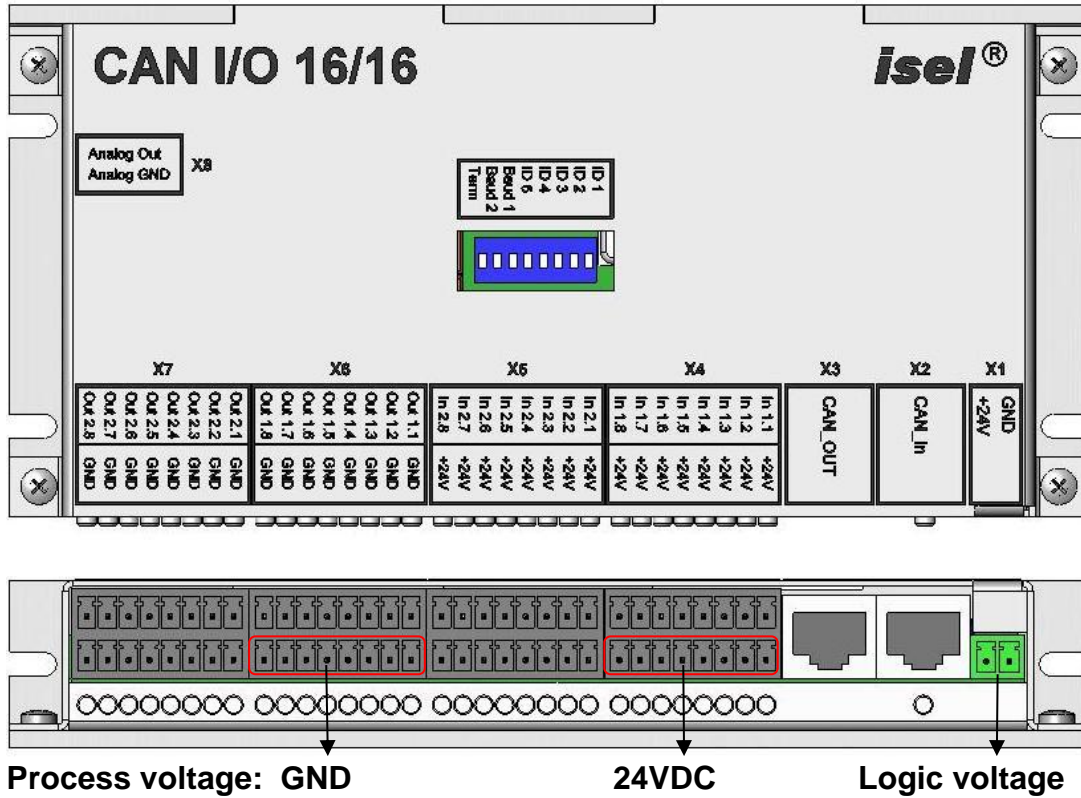
box size:	85mm (B) x 180mm (H) x 28mm (T)
weight:	260 g
safety class:	IP20
power supply 1: (logic voltage)	24VDC The logic voltage supplies the module internal logic like the CANopen microcontroller, DA and AD converters, optocouplers, relays and the CAN bus drivers. The logic voltage is fed to the module via connector X1 from an external 24VDC power supply device.
power supply 2: (process voltage)	24VDC The process voltage supplies sensors and actuators that are connected to the CAN-I/O module: <ul style="list-style-type: none"> • binary process sensors like switches or inductive sensors • binary process actuators like Ohm or inductive loads The process voltage is fed to the module via connector X4 (+24V) resp. connector X6 (GND) from an external 24VDC power supply device.
power consumption 1: (from / over logic voltage)	160mA
power consumption 2: (from / over process voltage)	 <p>Power consumption (from / over process voltage) depends from the external loads, e.g. especially from the binary process actuators connected to the module.</p> <p>Dimensioning the 24VDC power supply device for process voltage with a sufficient value is very important. The customer is responsible to do this dimensioning correctly.</p>
ambient temperature:	5°C bis +40°C
storage temperature:	-25°C bis +70°C
relative humidity:	max. 95%

CAN – I/O - 16/16		
digital inputs:	16	In1.1 to In1.8 and In2.1 to In2.8 using optocouplers (input current about 8mA)
digital outputs:	16	Out1.1 to Out1.8 and Out2.1 to Out2.8 8 relay outputs Out1.1 to Out1.8, I _{max} < 5A 8 electronic outputs (switching transistors) Out2.1 to Out2.8, I _{max} < 350mA, switching delay about 100µs, thermic protection, short-circuit protection
catch diode for digital outputs		Each inductive load plugged to digital outputs requires a separate external catch diode.
analog output:	1 Out2.8	0V – 10V over 8 Bit D/A converter (if the analog output is used the eight electronic digital outputs Out2.1 to Out2.8 can not be used for binary output)
fuse:		630 mA / 250V fast

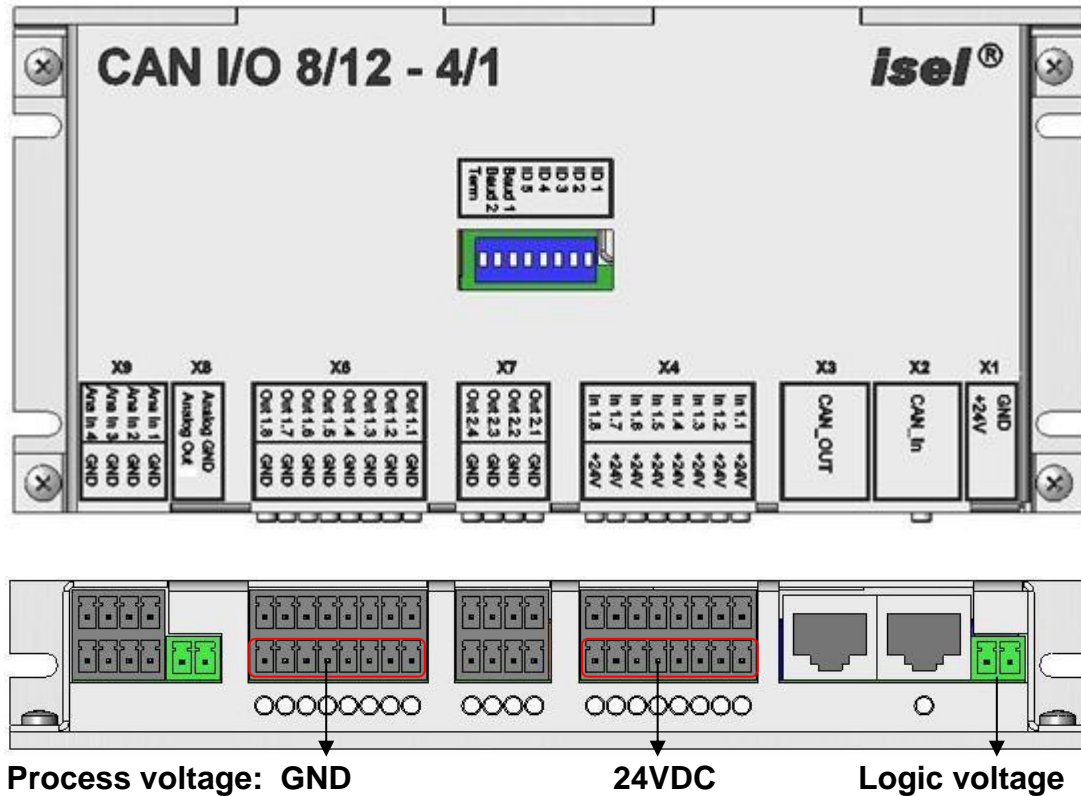
CAN – I/O - 8/12 - 4/1		
digital inputs:	8	In1.1 to In1.8 using optocouplers (input current about 8mA)
digital outputs:	12	Out1.1 to Out1.8 and Out2.1 to Out2.4 4 relays outputs Out2.1 to Out2.4, I _{max} < 5A 8 electronic outputs (switching transistors) Out1.1 to Out1.8, I _{max} < 350mA, switching delay about 100µs, thermic protection, short-circuit protection
catch diode for digital outputs		Each inductive load plugged to digital outputs requires a separate external catch diode.
analog output:	1	0V – 10V over 8Bit D/A transformer
analog inputs:	4	Ana In1 bis Ana In4, 0V – 10V, 16 Bit resolution
fuse:		630mA / 250V fast

2.2 Module overview

CAN-IO-16/16



CAN-IO-8/12- 4/1



2.3 Plug allocation

Supply voltage (Logic voltage)

Phoenix Mini Combicon 2 pins

<i>modul</i>	<i>connector</i>	<i>pin</i>	<i>signal</i>	<i>description</i>
CAN-IO 16/16	X1	1	GND	supply voltage GND
		2	+24V	supply voltage +24V
CAN-IO 8/12-4/1	X1	1	GND	supply voltage GND
		2	+24V	supply voltage +24V

CAN In, CAN Out

RJ45 connector

<i>modul</i>	<i>connector</i>	<i>pin</i>	<i>signal</i>	<i>description</i>
CAN- IO 16/16	X2 CAN In X3 CAN Out	1	n.c.	not connected
		2	n.c.	not connected
		3	n.c.	not connected
		4	CAN_H	signal CAN high
		5	CAN_L	signal CAN low
		6	CAN_GND	GND
		7	n.c.	not connected
		8	n.c.	not connected
CAN-IO 8/12-4/1	X2 CAN In X3 CAN Out	1	n.c.	not connected
		2	n.c.	not connected
		3	n.c.	not connected
		4	CAN_H	signal CAN high
		5	CAN_L	Signal CAN low
		6	CAN_GND	GND
		7	n.c.	not connected
		8	n.c.	not connected

Input ports

Phoenix Mini Combicon 8 x 2 pins

<i>module</i>	<i>connector</i>	<i>pin bottom</i>	<i>signal</i>	<i>description</i>
CAN-IO 16/16	X4 In 1 and X5 In 2	1	+24V	
		2	+24V	
		3	+24V	
		4	+24V	
		5	+24V	
		6	+24V	
		7	+24V	
		8	+24V	
		<i>pin top</i>	<i>signal</i>	<i>description</i>
		9	In 1	bit 0
		10	In 2	bit 1
		11	In 3	bit 2
		12	In 4	bit 3
		13	In 5	bit 4
		14	In 6	bit 5
		15	In 7	bit 6
16	In 8	bit 7		
		<i>pin bottom</i>	<i>signal</i>	<i>description</i>
CAN-IO 8/12-4/1	X4 In 1	1	+24V	
		2	+24V	
		3	+24V	
		4	+24V	
		5	+24V	
		6	+24V	
		7	+24V	
		8	+24V	
		<i>pin top</i>	<i>signal</i>	<i>description</i>
		9	In 1	bit 0
		10	In 2	bit 1
		11	In 3	bit 2
		12	In 4	bit 3
		13	In 5	bit 4
		14	In 6	bit 5
		15	In 7	bit 6
16	In 8	bit 7		

Output ports

Phoenix Mini Combicon 8 x 2pol.

<i>module</i>	<i>connector</i>	<i>pin bottom</i>	<i>signal</i>	<i>description</i>
CAN-IO 16/16	X6 Out 1	1	GND	
		2	GND	
		3	GND	
		4	GND	
		5	GND	
		6	GND	
		7	GND	
		8	GND	
	X7 Out 2	<i>pin top</i>	<i>signal</i>	<i>description</i>
		9	Out 1	bit 0
		10	Out 2	bit 1
		11	Out 3	bit 2
		12	Out 4	bit 3
		13	Out 5	bit 4
		14	Out 6	bit 5
		15	Out 7	bit 6
	16	Out 8	bit 7	
		<i>pin bottom</i>		
CAN-IO 8/12-4/1	X6 Out 1	1	GND	
		2	GND	
		3	GND	
		4	GND	
		5	GND	
		6	GND	
		7	GND	
		8	GND	
	X7 Out 2	<i>pin top</i>		
		9	Out 1	bit 0
		10	Out 2	bit 1
		11	Out 3	bit 2
		12	Out 4	bit 3
		13	Out 5	bit 4 (not on X7)
		14	Out 6	bit 5 (not on X7)
		15	Out 7	bit 6 (not on X7)
	16	Out 8	bit 7 (not on X7)	

Analog output

Phoenix Mini Combicon 2 pins

<i>module</i>	<i>connector</i>	<i>pin</i>	<i>signal</i>	<i>description</i>
CAN-IO 16/16	X8 AnaOut	1	analog Out GND	reference for analog output
		2	analog Out	analog output (0 – 10V)
CAN-IO 8/12-4/1	X8 AnaOut	1	analog Out GND	reference for analog output
		2	analog Out	analog output (0 – 10V)

Analog inputs

Phoenix Mini Combicon 2 pins

<i>module</i>	<i>connector</i>	<i>pin bottom</i>	<i>signal</i>	<i>description</i>
CAN-IO 16/16		-	-	-
		<i>pin bottom</i>	<i>signal</i>	<i>description</i>
CAN-IO 8/12-4/1	X9 AnaIn	1	GND	reference for analog input 1
		2	GND	reference for analog input 2
		3	GND	reference for analog input 3
		4	GND	reference for analog input 4
		<i>pin top</i>		
		5	Analog In 1	analog input 1
		6	Analog In 2	analog input 2
		7	Analog In 3	analog input 3
8	Analog In 4	analog input 4		

2.4 DIP Switches

The node address of a CAN module is used to clearly identify the device on the CAN bus.

We submit the following assignment of the modules node address:

<i>Module</i>		<i>Node address</i>
1. positioning module	→	Node address 1
2. positioning module	→	Node address 2
3. positioning module	→	Node address 3
additional positioning module	→	Node address 4-9
4. I/O-module (firstt)	→	Node address 16
5. I/O-module (second)	→	Node address 17
additional I/O-modules	→	Node address 18 and 19
6. HF- converter	→	Node address 10
additional HF-converter	→	Node address 11,12 or 13

CAN Node address (ID1 – ID5)

The switches ID1 – ID5 are used to set the CAN node address. Possible values are 1 to 31.

<i>Node address</i>	<i>ID5</i>	<i>ID4</i>	<i>ID3</i>	<i>ID2</i>	<i>ID1</i>
16	on	off	off	off	off
17	on	off	off	off	on
...					
31	on	on	on	on	on

Baud rate (Baud 1, Baud 2)

The switches Baud 1 and Baud 2 are used to set the baud rate.

Following values are possible:

<i>Baud rate</i>	<i>Baud 1</i>	<i>Baud 2</i>
1 MBit/s	off	off
500 kBit/s	on	off
125 kBit/s	off	on
20 kBit/s	on	on

Terminating resistor (Term)

Switch Term is used to switch a CAN bus termination resistor on or off. If the switch is on a 120 Ω resistor is enabled.

2.5 Assembly, installation, connection

Be sure that the jumper settings are correct before you build in the CAN-I/O module into a Control cabinet or another device (refer to chapter 2.4).

2.5.1 Base connection (Logic voltage and CAN bus)

If you have configured the DIP switches the module can be built in to the intended mounting place.

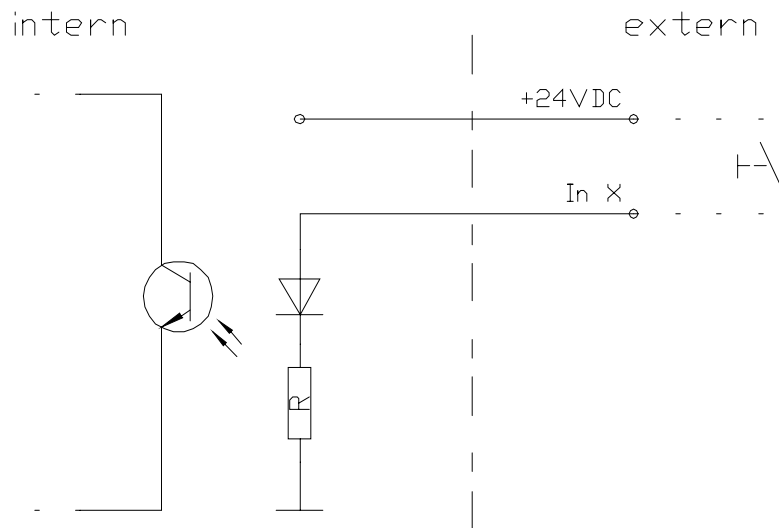
Now the 24V-power supply (logic voltage) must be connected with X1 (see connection assignment). Also the CAN- bus interface connection must be plugged in (CAN In must be connected)



If the CAN-I/O-module is the last device in the CAN-topology the DIP-switch 8 must be set to “on” to enable the terminating resistor.

2.5.2 Digital inputs

The digital inputs of the CAN-I/O-modules are realized using 24V-DC process voltage. They can be connected to process sensors as follows:

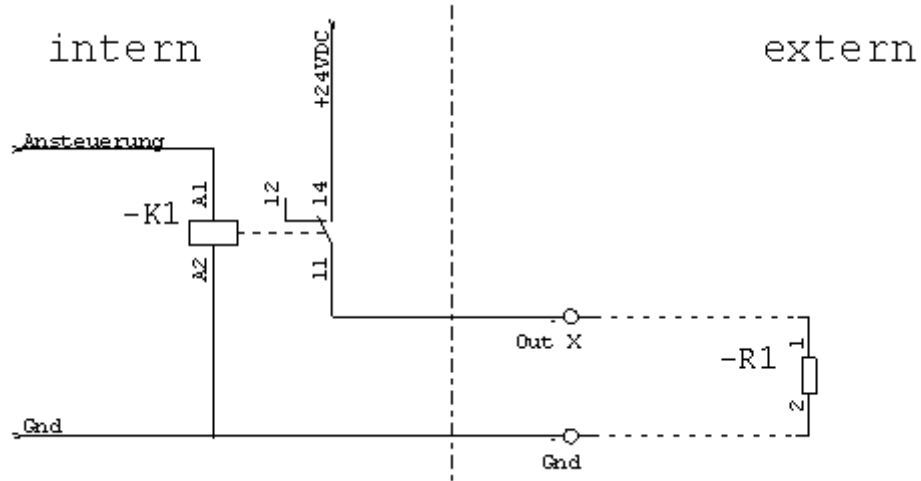


The reference potential (+24VDC, GND) for the external sensor (in the principle drawing a simple switch) is the process voltage.

The input load is about 8mA.

2.5.3 Digital outputs (relay outputs)

The digital relay outputs of the CAN-I/O-modules switch 24V-DC process voltage. Integrate the outputs as follows:



The reference potential (+24VDC, GND) for the external actuator (in the principle drawing a simple resistor) is the process voltage.

The relay outputs

- Out1.1 to Out1.8 at CAN-I/O-Module **CAN-IO 16/16** = port1 (X6)
- Out2.1 to Out2.4 at CAN-I/O-Module **CAN-IO 8/12-4/1** = port2 (X7)

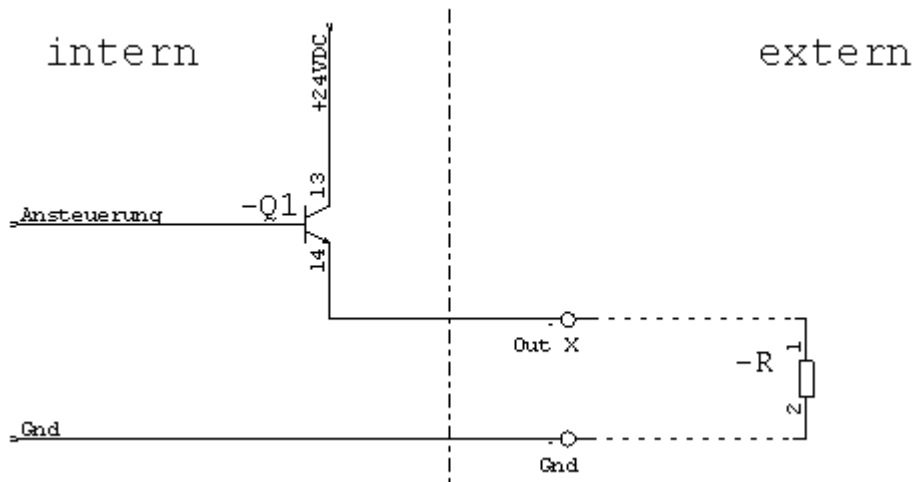
can be rated with 5A for each output.



Driving inductive loads on digital outputs (for example relays) put parallel to every load (relay) a catch diode (anode to GND).

2.5.4 Digital electronic outputs (switching transistors)

The digital electronic outputs (switching transistors, P channel, 24V switching) of the CAN-I/O-modules switch 24 VDC process voltage. Integrate the outputs as follows:



The reference potential (+24VDC, GND) for the external actuator (in the principle drawing a simple resistor) is the process voltage.

The digital electronic outputs

- Out2.1 to Out2.8 at CAN-I/O-Module **CAN-IO 16/16** = port2 (X7)
- Out1.1 to Out1.8 at CAN-I/O-Module **CAN-IO 8/12-4/1** = port1 (X6)

can be loaded with max. 350mA on each output.

info

IMPORTANT when using the CAN-I/O-Module **CAN-IO 16/16**, here obtains for digital electronic outputs Out2.1 bis Out2.8 = Port2 (X7):

If the integrated D/A converter is used for analog output then port2 is reserved. That means port2 is not longer available for digital outputs. To prevent confusions you can deactivate port2 by removing Jumper1 (refer the next chapter **Analog output**). Through this the port2 LEDs are also deactivated.



Driving inductive loads on digital outputs (for example relays) put parallel to every load (relay) a catch diode (anode to GND).

2.5.5 Analog output

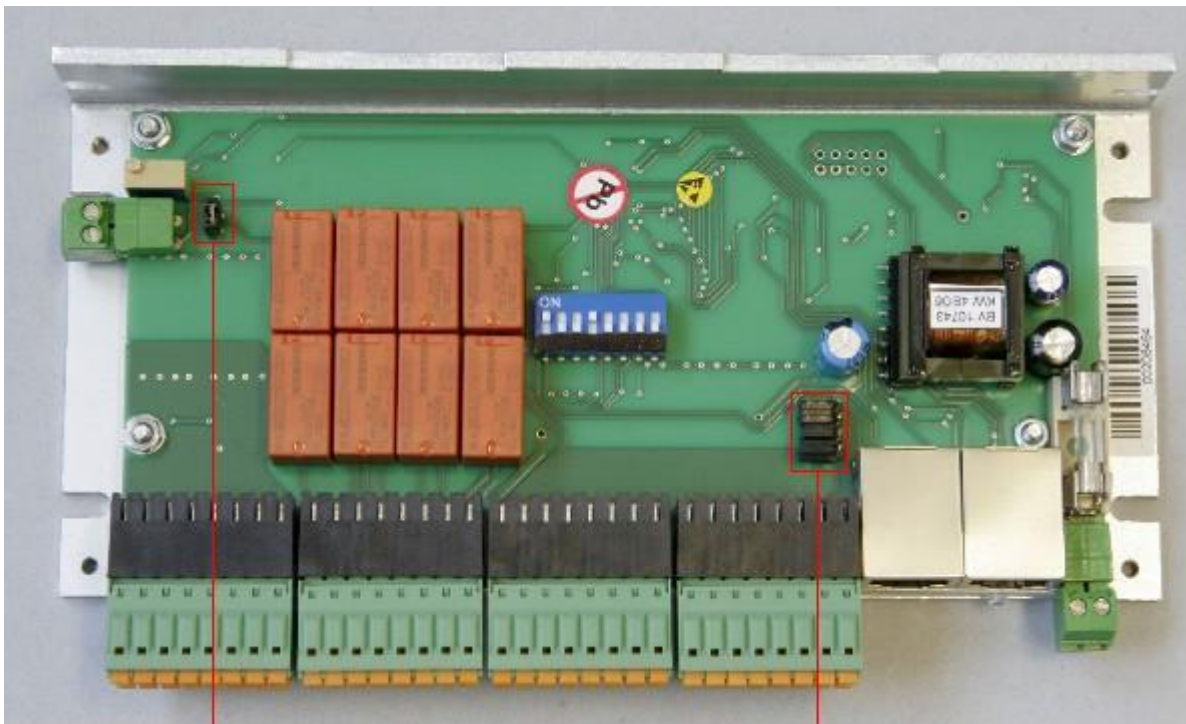
You can use this output for controlling an external device with 0 to 10V interface / input (e.g. the target velocity for HF converter).

If the analog output is used, port2 is no longer available for digital outputs.



Output current not more than 15mA!

CAN-I/O 16/16 Jumper settings



Jumper 1 plugged:

- if the analog output is in use the LEDs from output Port A2 signalize the binary analog output value.

Delivery state:

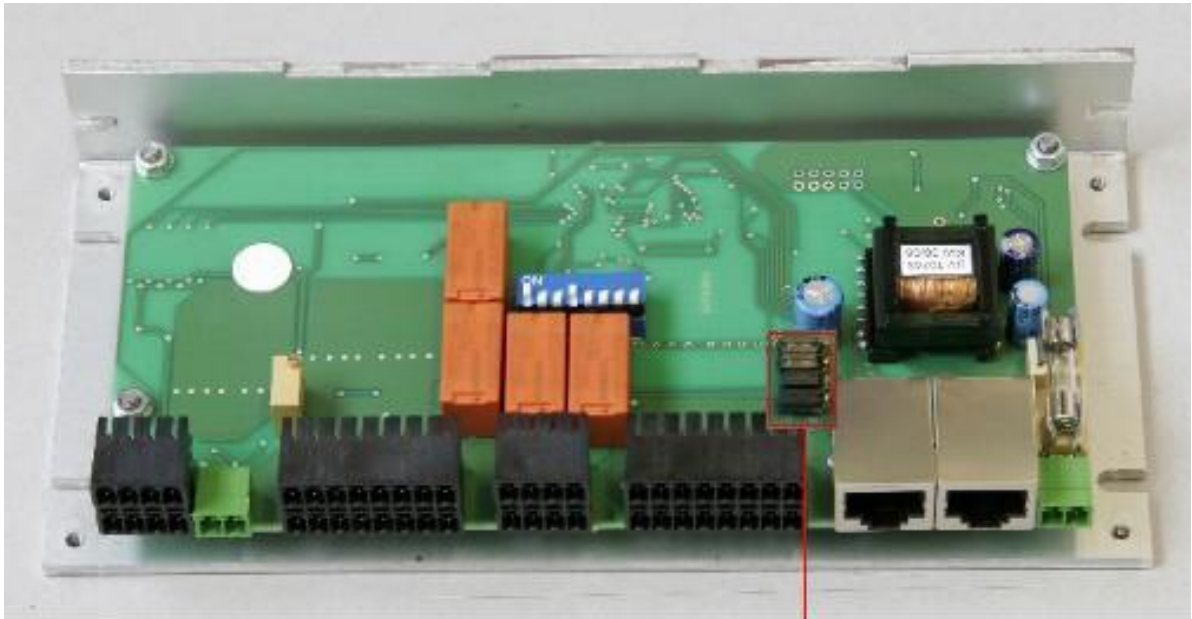
Jumper 2 (4 pieces) not plugged. Galvanic separation the 24DCV process voltage from 24VDC logic voltage is guaranteed.



If you plug the jumpers 2 then there is no galvanic separation between 24VDC process voltage and 24VDC logic voltage!

This may be effects damages on the CAN-I/O-Module.

CAN-I/O 8/12 - 4/1 Jumper settings



Delivery state:

Jumper 1 is not plugged. Galvanic separation the 24VDC process voltage from 24VDC logic voltage is guaranteed.

Jumper 1 (4 pieces)

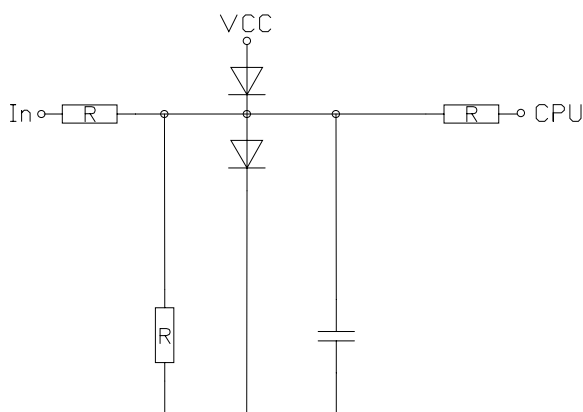


If you plug the jumper 1 then there is no galvanic separation between 24VDC process voltage and 24VDC logic voltage!

This may be effects damages on the CAN-I/O-Module

2.5.6 Analog input

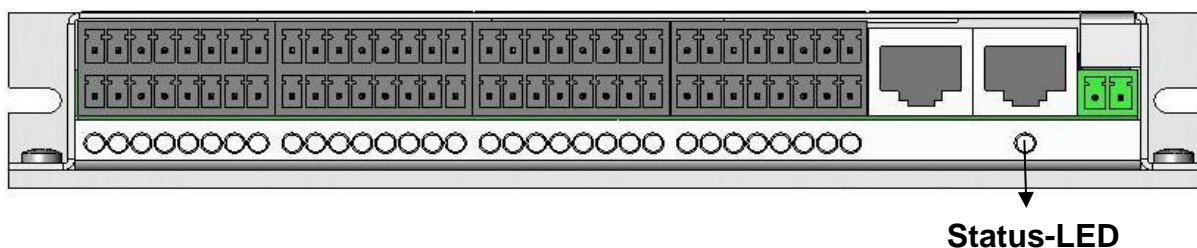
The module CAN-I/O-8/12-4/1 has 4 analog Inputs with an input voltage range from 0V to 10V and a resolution of 16 Bit. On these inputs you can directly connect e.g. sensors. These inputs have an input impedance of 2kΩ and provides an internal RC filter.



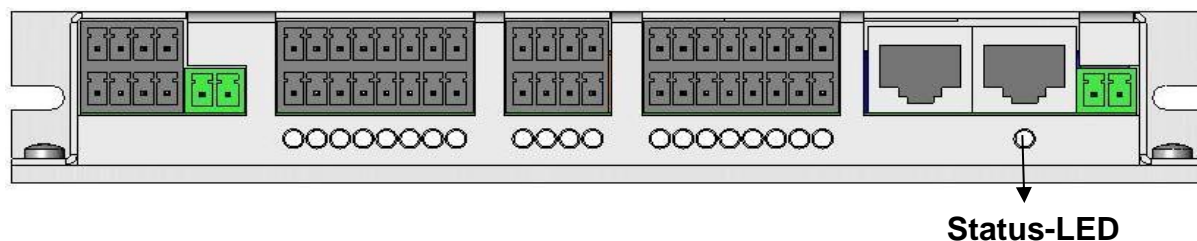
2.5.7 Diagnosis, signalization, fault states

Diagnosis of the CAN-I/O modules is possible by observing the status LED.

CAN-IO-16/16



CAN-IO-8/12- 4/1



This LED signals 4 different states:

LED duty cycle	State
0%, off	Error: CAN I/O module is not in operational state, logic voltage is not available or the internal power supply (DC/DC: 24 VDC to 5,0 V) is damaged
10%	No error → normal operation
50%	Uncritical error or warning
90%	Critical error (NMT error, output error)

3 Integration into the control software (ProNC, Remote)

3.1 Settings in the module management

At first the Interface-DLL which opens the connection between ProNC/Remote and CAN-IO-Device must be set-up.

If not already available, copy the files

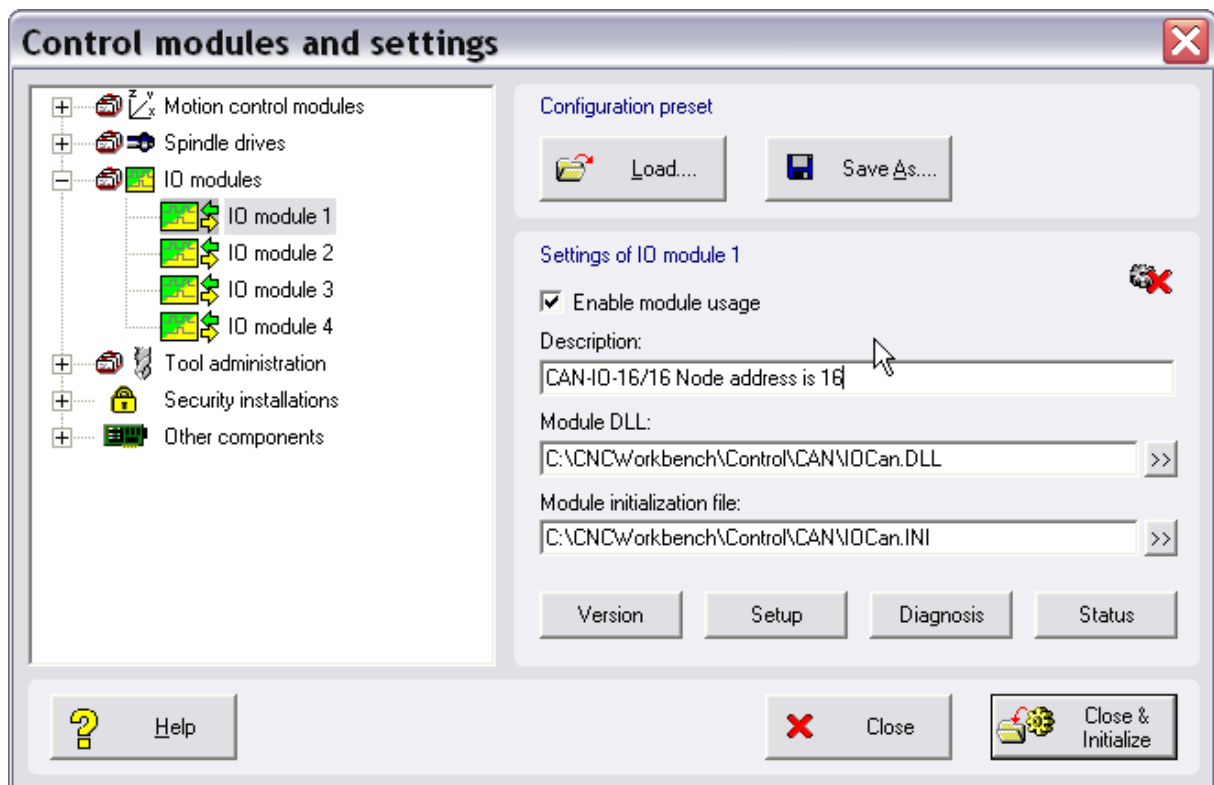
IoCan.DLL and
IoCan.INI

into a new sub-directory of the CNCworkbench - directory.


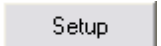
Our suggestion for the new directory:

{ProgramPath}\CNCWorkbench\Control\Can

After the files are copied the application must get to know the new IO-device- Therefore start ProNC/Remote and open the Setup-dialog for the control with the help of the command "Setup – Control...". The following dialog will be appear:

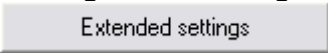


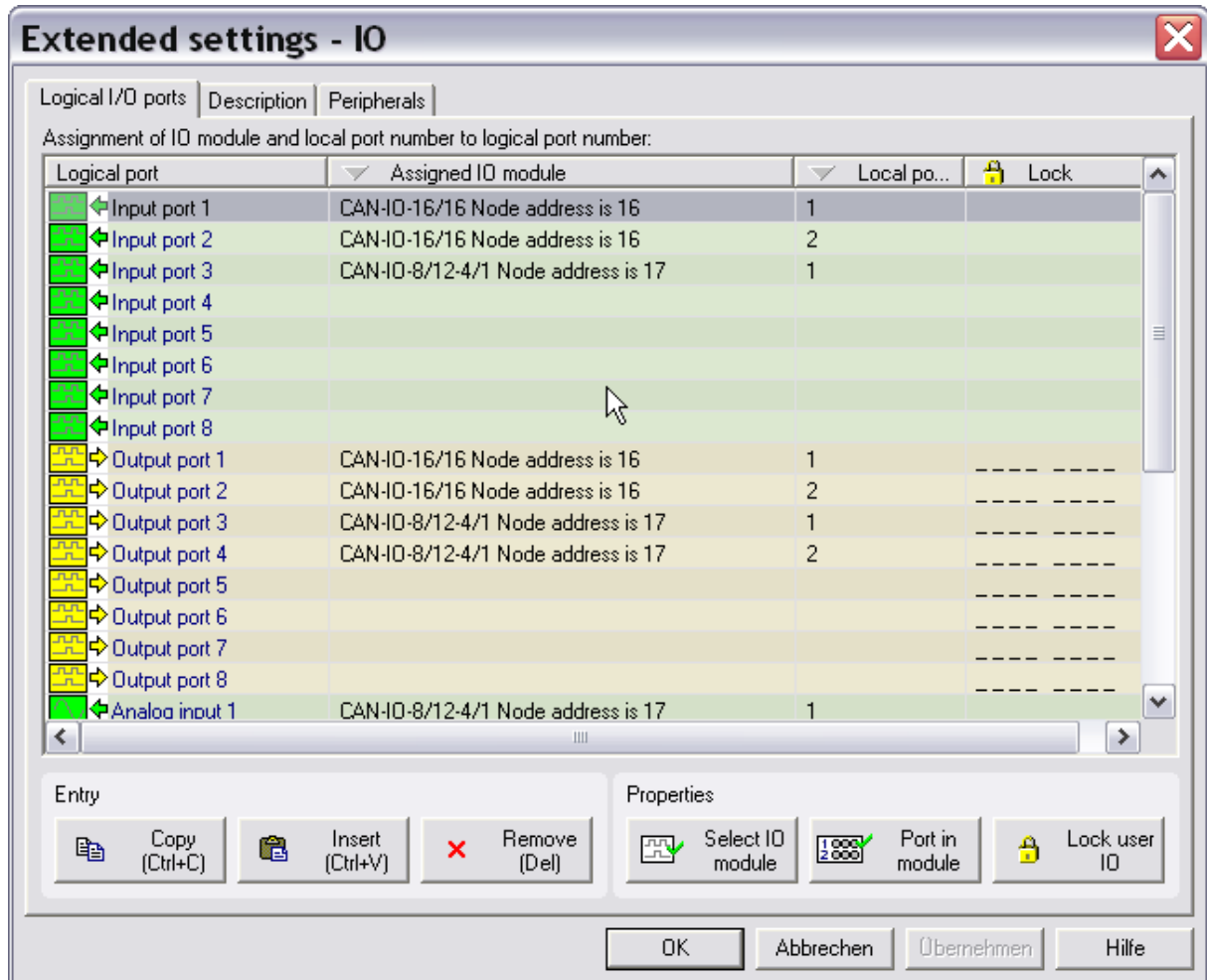
Follow the commands to get the USB-IO device into the modul management:

- Choose in the tree view the IO-Modul which is not in use and name it e.g."CAN-IO-16/16 Node address is 16" or only "CAN IO".
- Click on ">>" next to the Edit field "Modul DLL". Choose the "IoCan.DLL" in the "CNCWorkbench\Control\Can" directory. The Edit field "Modul initialisation file" shows automatically the "CNCWorkbench\Control\Can\IoCan.INI" file. You don't need to rename the file.
- Click on button  (in case nothing will happen, choose another IO-Modul from the tree view and after that choose the IO-Modul for the CAN-IO).
Click on  to open the Setup dialog.

In this dialog you can set different settings for the module. The most important setting are the node address of the module. The default value for the address is 16. Furthermore you can set initialization values for digital and analog output ports. If you start the software (ProNC / Remote) these values will be set.

3.2 Settings within the Contro administration

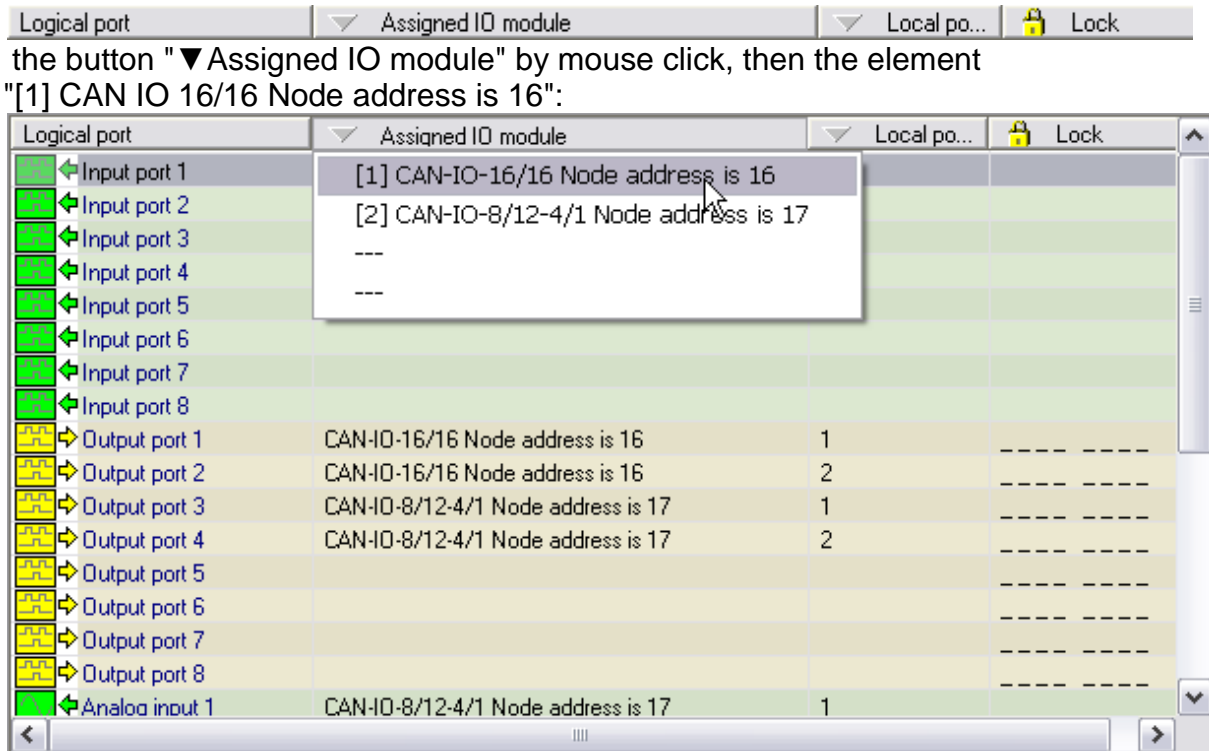
To get access to the IO-module within the Control administration one setting in the top level must be changed. Open the "Extended settings-IO" - Dialog as follows. Highlight in the tree structure "IO modules". Click on  on the right side. You can see the following dialog:



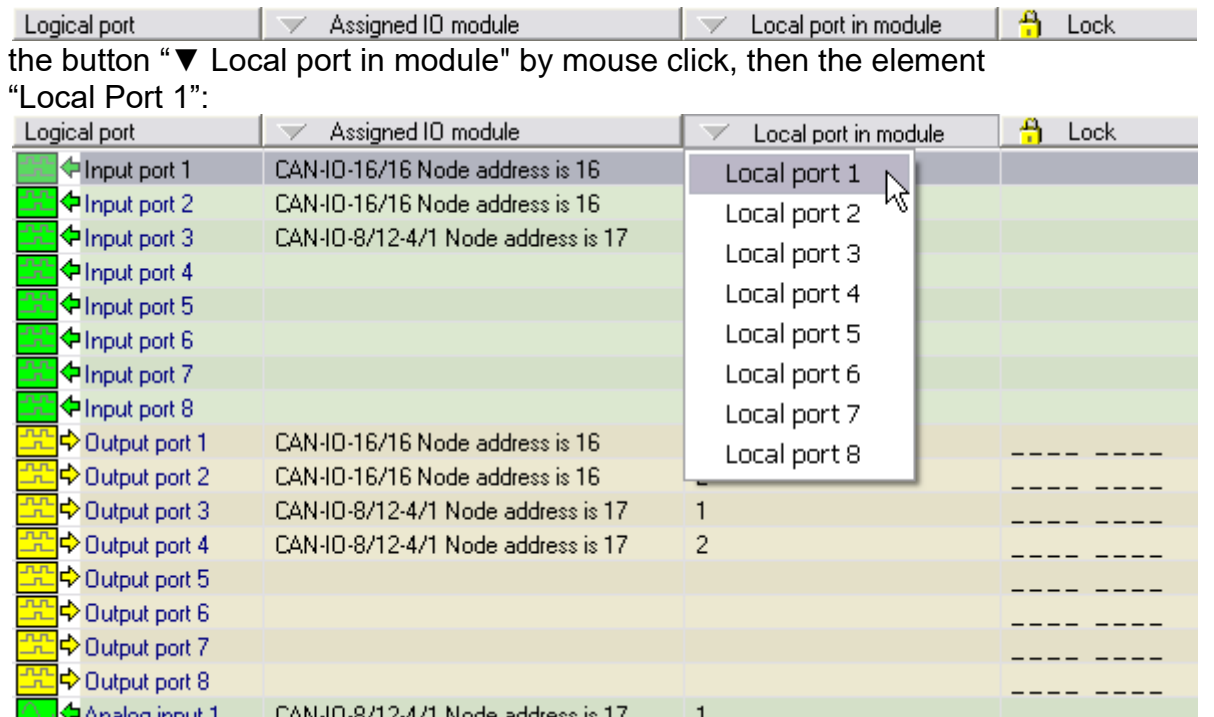
The IO-module " CAN-IO-16/16 Node address is 16" needs a logical Input / Output port number to access the Input / Output-functions from the CNC control software ProNC resp. Remote.

Mind the following notes:

- Highlight a free logical port, for example: Input port 1
- Choose in the button band



- Choose in the button band



- Click on “OK” to close the dialog

Now you must do the described steps for all logical output ports, analog output and analog input. You find these entries by scrolling down in the list field.

Close the dialog “Control modules and settings” over the button “Close & Initialize” to reinitialize the new modules.

The following lines show the use of local input ports, output ports, analog output and analog input of the different modules.

CAN- IO- 16/16

Local input ports: Port 1 and Port 2

Local output ports: Port 1 and Port 2

Local analog output: Port 1 (alternatively with the local output port Port 2)



If the analog output is used, Port 2 (X7) is no longer available for digital outputs. You must clear the entry for this port in the list.

CAN- IO- 8/12- 4/1

Local input ports: Port 1

Local output ports: Port 1 and Port 2

Local analog output: Port 1

Local analog inputs: Port 1 - Port 4



At the local output port 2 you can only use the outputs 1-4:

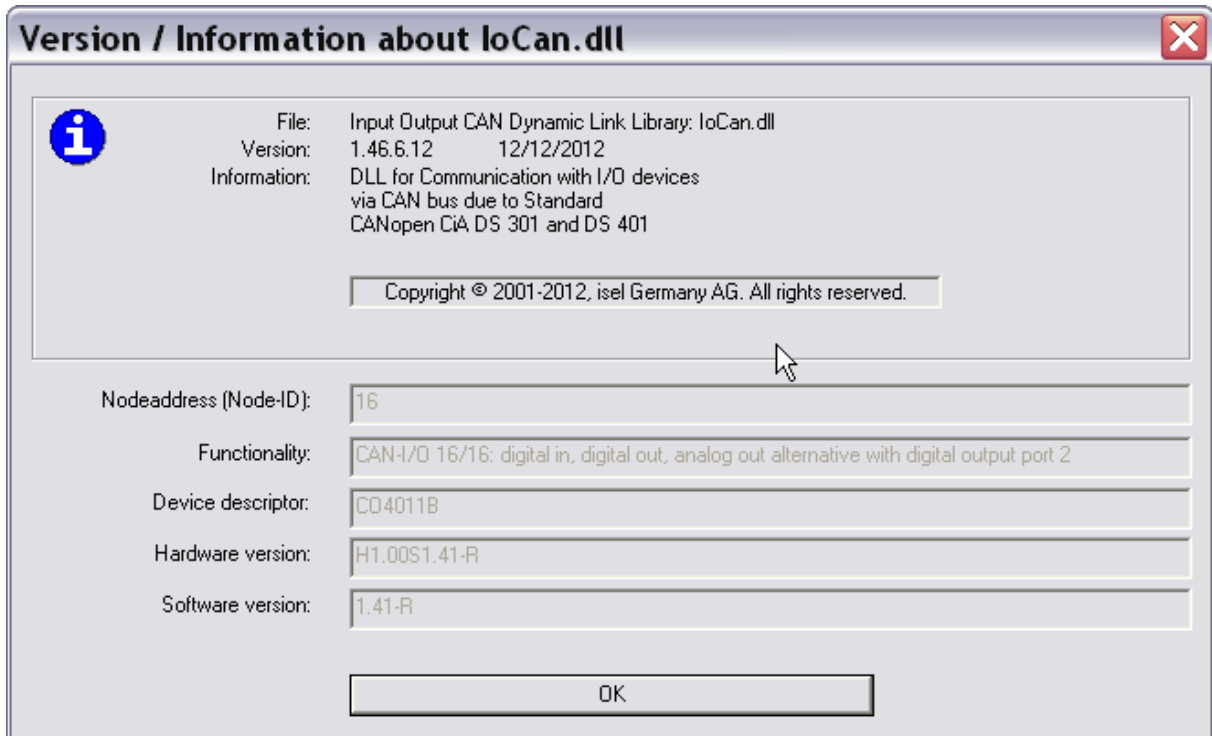
A2.1 = Out 2.1


A2.2 = Out 2.2

A2.3 = Out 2.3


A2.4 = Out 2.4

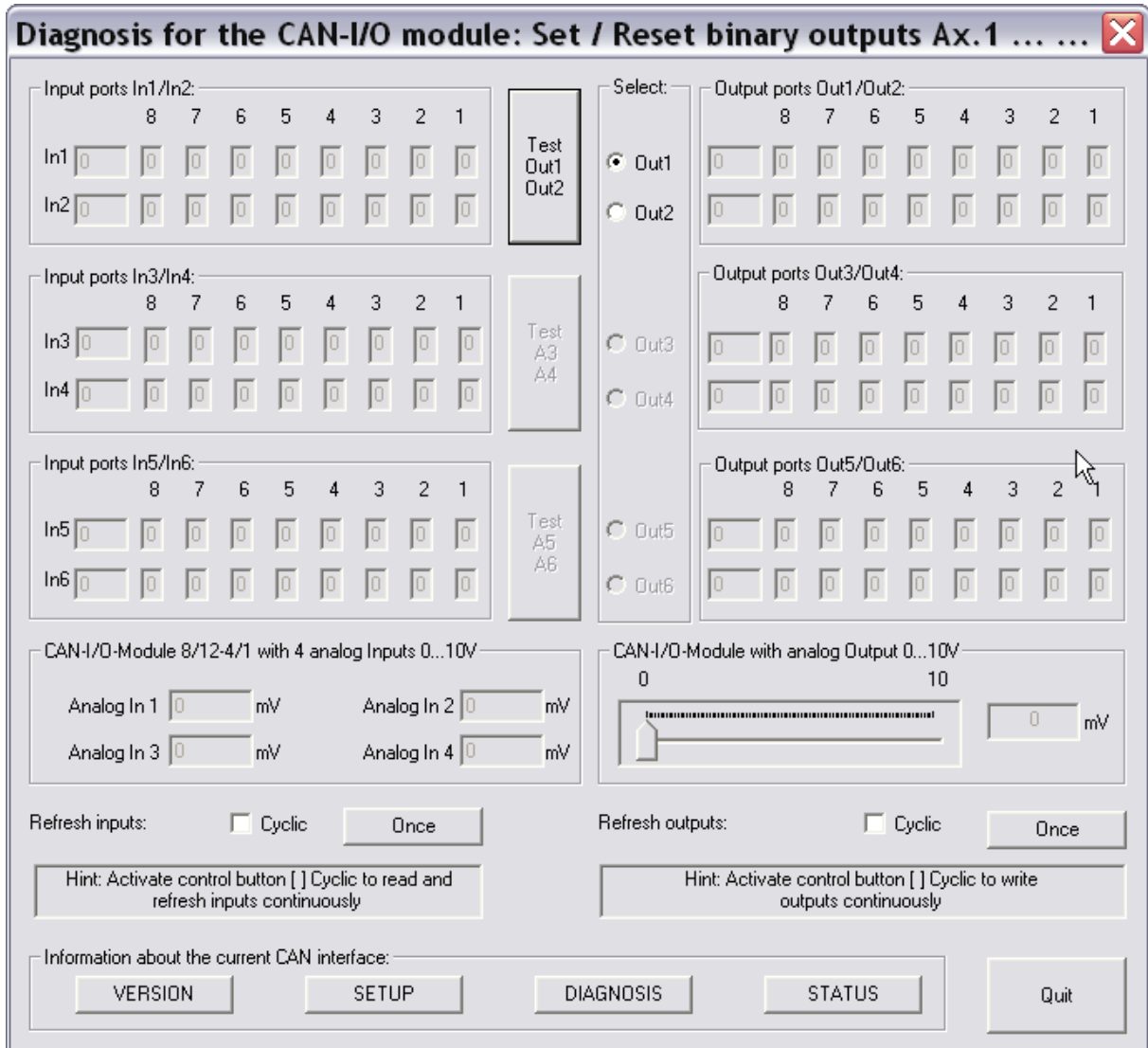
3.3 Version information




Inside the module management you can show version information of the used module DLL and the connected device type by pressing the button  .

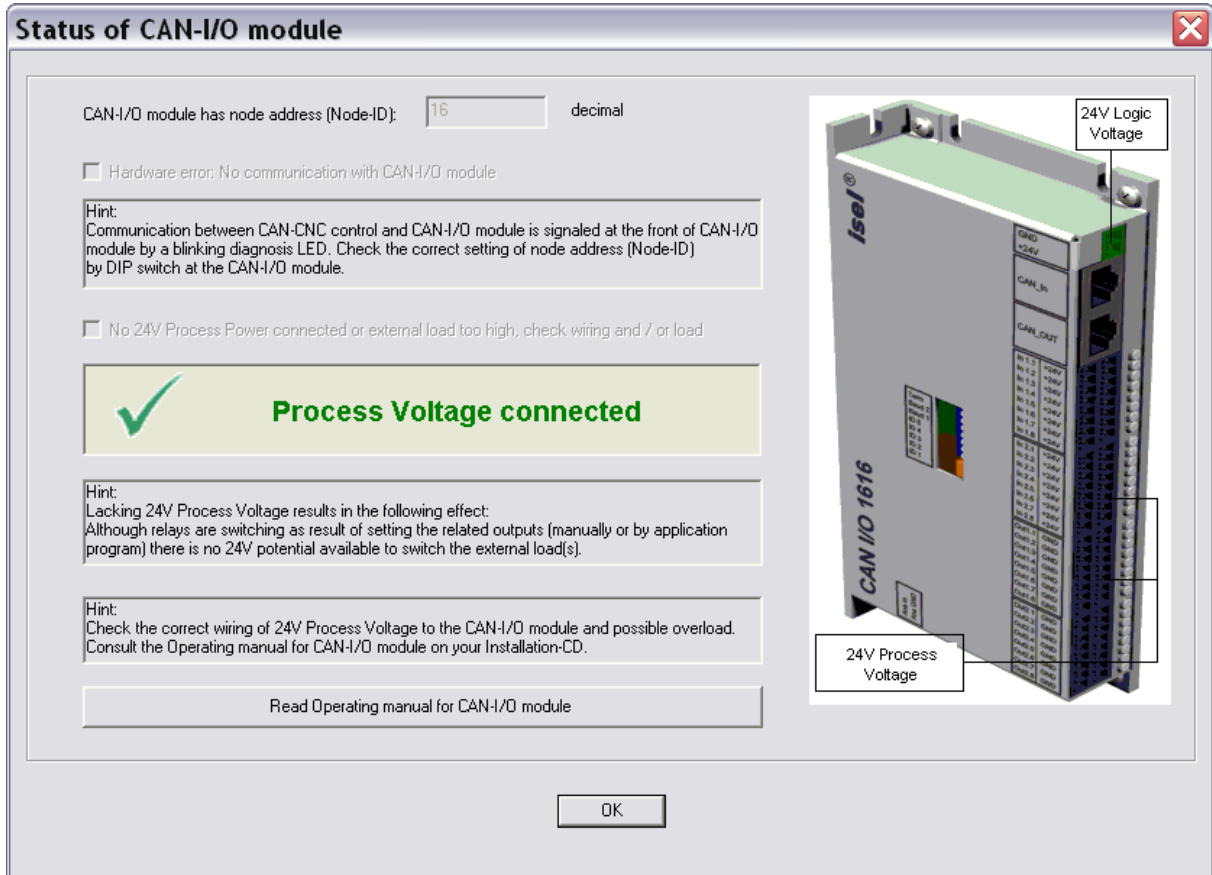
3.4 Diagnosis function

The button  allows you to access input / output functions of the connected CAN-I/O-module. In this dialog you can e.g. switch outputs separately or you can check the state of inputs.



3.5 Status information

Using the button  you can check whether the process voltage is connected to the CAN I/O module.



If there is no process voltage connected to the CAN I/O module you can not measure 24VDC potential between the load connectors X4 (24VDC) and X6 (GND).

4 Index

A

actuators 3
 ambient temperature..... 4

C

CAN bus 2
 CANopen 2
 catch diode..... 6, 14
 CNC-Controller 2

G

galvanic separation..... 16, 17

I

intended use 4
 IoCan.DLL..... 20

J

Jumper 1 16, 17
 Jumper 2 16

L

logic voltage 5

M

module management..... 24

N

node address..... 2, 20

P

process voltage 5, 26

R

resolution..... 6

S

sensors 3
 short-circuit protection..... 6
Status-LED..... 18
 Storage temperature 4
 switching delay 6

T

terminating resistor 13
 termination resistor 12
 thermic protection..... 6